



INDOFINE Chemical Company, Inc.

121 Stryker Lane, Bldg. 30, Suite 1 • Hillsborough, NJ 08844 • U.S.A.

Phone: (908) 359-6778 • FAX: (908) 359-1179

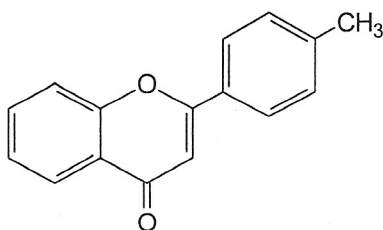
website: www.indofinechemical.com

e-mail: chemical@indofinechemical.com

CERTIFICATE OF ANALYSIS

Cat No.: 19-311

<u>Product:</u>	4'-METHYLFLAVONE
<u>Lot Number:</u>	0007166
<u>Molecular Formula:</u>	C ₁₆ H ₁₂ O ₂
<u>Molecular Weight:</u>	236.27
<u>Melting Point:</u>	112-114°C
<u>Appearance:</u>	Pale brown colored powder
<u>Solubility:</u>	Soluble in Chloroform
<u>TLC:</u>	Hexane:Ethyl acetate (8:2)
<u>NMR Spectrum:</u>	Enclosed
<u>Purity(HPLC):</u>	99.65%





INDOFINE Chemical Company, Inc.

121 Stryker Lane, Bldg. 30, Suite 1 • Hillsborough, NJ 08844 • U.S.A.

Phone: (908) 359-6778 • FAX: (908) 359-1179

website: www.indofinechemical.com

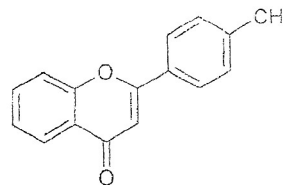
e-mail: chemical@indofinechemical.com

HPLC ANALYSIS

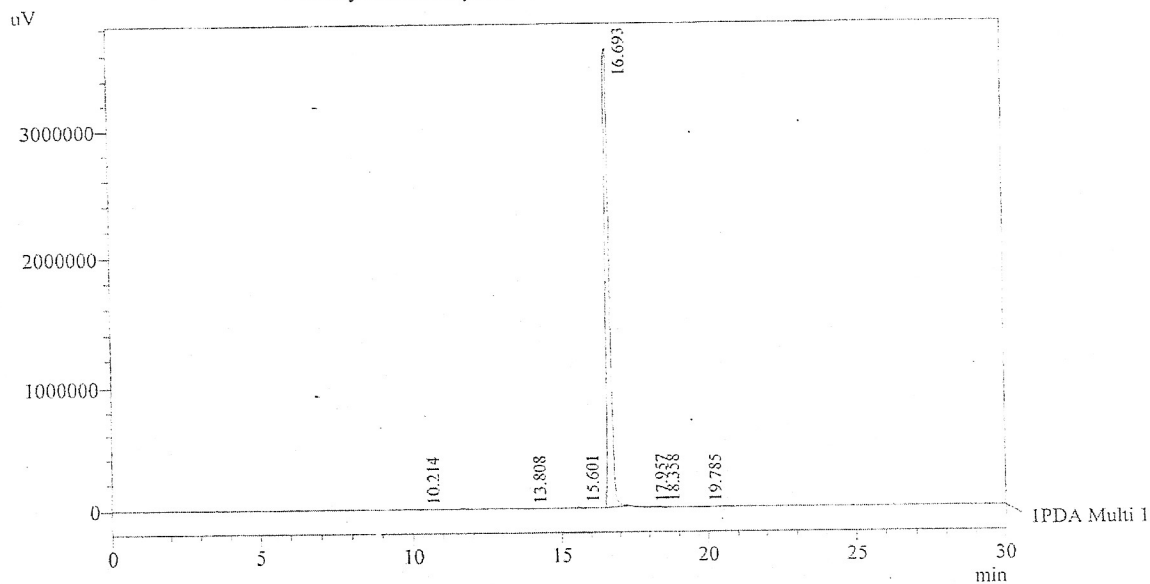
Acquired by : Sanjeev
 Sample Name : 4'-Methylflavone
 Sample ID : Lot No:-0007166
 Injection Volume : 20 uL
 Data Filename : 140812E.lcd
 Method Filename : Linear Gradient.M.lcm

Catalog no.: 19-311
 Product name: 4'-Methylflavone
 Lot No.: 0007166

Column : LUNA C-18(2) (250mm x4.6mm 5.0µ)
 Flow : 1.000 mL/min.
 Mobile Phase : A(0.05% TFA in water) B(Acetonitrile)
 0.01 90 10
 12.0 10 90
 20.0 10 90
 25.0 90 10
 30.0 90 10



Chromatogram
 4'-Methylflavone D:\promonence\Data\2012\AUG-2012\140812E.lcd



1 PDA Multi 1 / 254nm 4nm

PeakTable

PDA Ch1 254nm 4nm

Peak#	Name	Ret. Time	Area	Area %	Relative Retention Time
1	RT:10.214	10.214	4840	0.01	0.61
2	RT:13.808	13.808	7698	0.02	0.83
3	RT:15.601	15.601	54917	0.16	0.93
4	4'-Methylflavone	16.693	34269707	99.65	1.00
5	RT:17.957	17.957	8041	0.02	1.08
6	RT:18.358	18.358	34428	0.10	1.10
7	RT:19.785	19.785	8990	0.03	1.19
Total			34388620	100.00	

ICC INDOFINE Chemical Company, Inc.

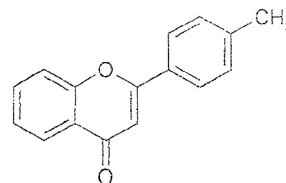
121 Stryker Lane, Bldg. 30, Suite 1 • Hillsborough, NJ 08844 • U.S.A.

Phone: (908) 359-6778 • FAX: (908) 359-1179

website: www.indofinechemical.com

e-mail: chemical@indofinechemical.com

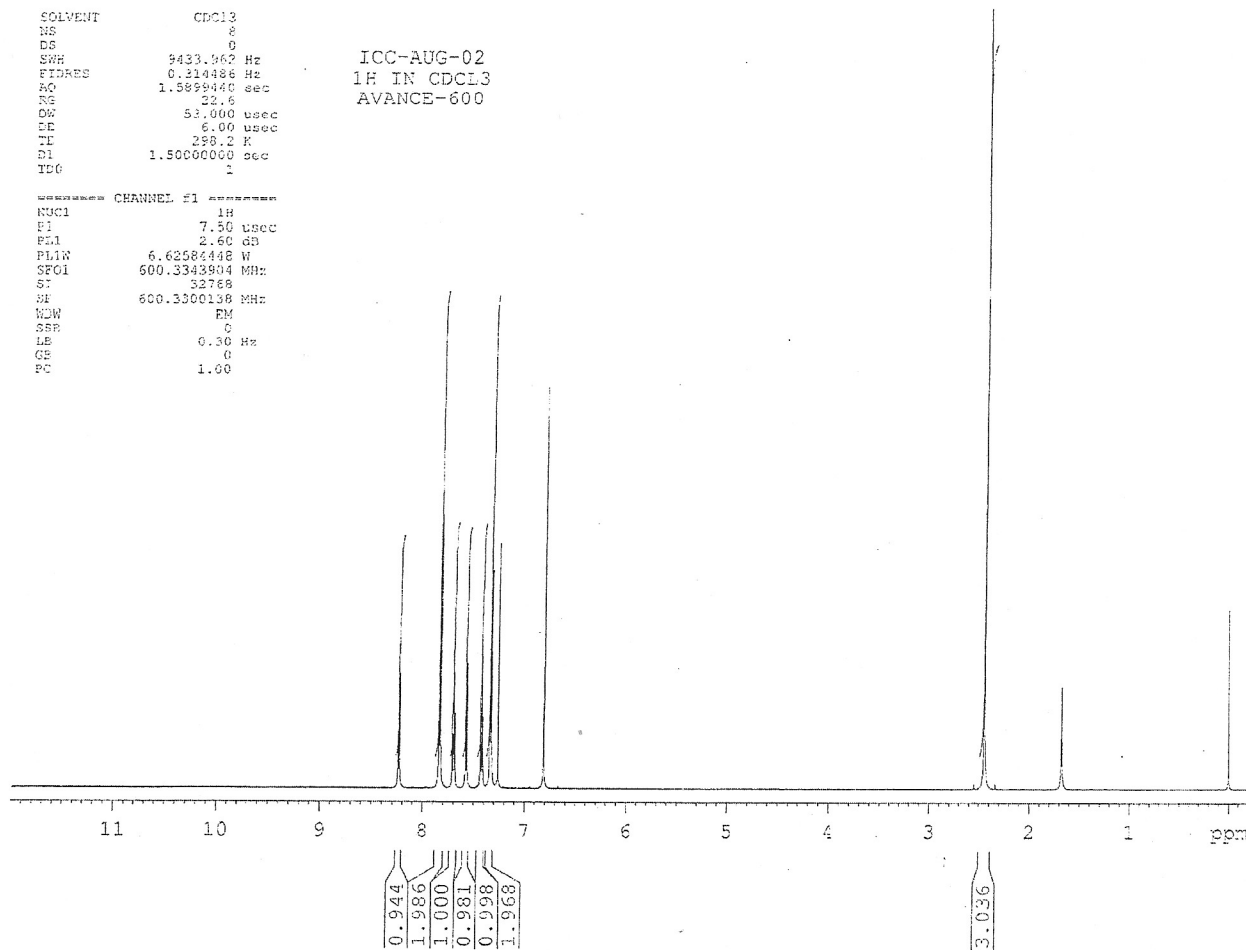
Catalog no.: 19-311
Product name: 4'-Methylflavone
Lot No.: 0007166



SOLVENT CDCl3
NS 8
DS 0
SWH 9433.962 Hz
FIDRES 0.310486 Hz
AQ 1.5899440 sec
RG 22.6
OR 53.000 usec
DR 6.00 usec
TE 298.2 K
D1 1.5000000 sec
TDG 1

ICC-AUG-02
1H IN CDCl3
AVANCE-600

===== CHANNEL #1 =====
NUC1 1H
P1 7.50 usec
PL1 2.60 dB
PL1W 6.6258448 W
SFO1 600.3343904 MHz
S7 32768
DE 600.3300138 MHz
WDW EM
SFR 0
LE 0.30 Hz
GB 0
PC 1.00



ICC INDOFINE Chemical Company, Inc.

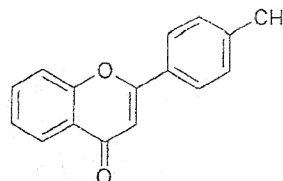
121 Stryker Lane, Bldg. 30, Suite 1 • Hillsborough, NJ 08844 • U.S.A.

Phone: (908) 359-6778 • FAX: (908) 359-1179

website: www.indofinechemical.com

e-mail: chemical@indofinechemical.com

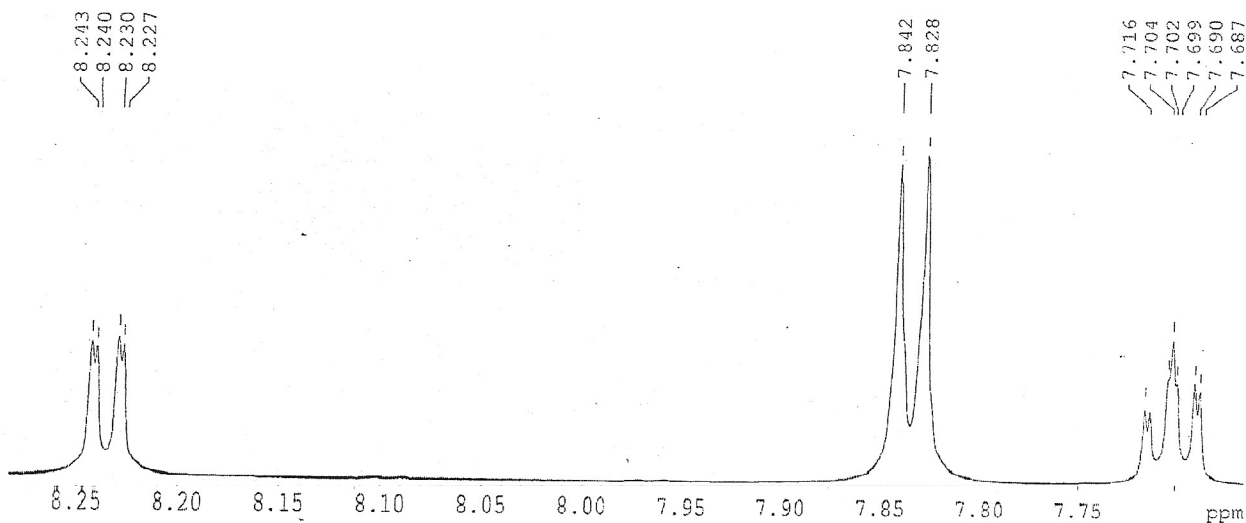
Catalog no.: 19-311
Product name: 4'-Methylflavone
Lot No.: 0007166



SOLVENT CDCL3
NS 8
DS 0
SWH 9433.962 Hz
FIDRES 0.314406 Hz
AQ 1.5899410 sec
RG 22.6
DW 53.000 usec
DE 6.00 usec
TE 298.2 K
DI 1.5000000 sec
TD0 1

ICC-AUG-02
1H IN CDCL3
AVANCE-600

----- CHANNEL f1 -----
NUC1 1H
P1 7.50 usec
PL1 2.60 dB
PL1W 6.62584448 W
SFO1 600.3343904 MHz
SI 32768
SF 600.3300138 MHz
WDW EM
SSE 0
LB 0.30 Hz
GB 0
PC 1.00



ICC INDOFINE Chemical Company, Inc.

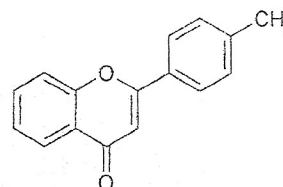
121 Stryker Lane, Bldg. 30, Suite 1 • Hillsborough, NJ 08844 • U.S.A.

Phone: (908) 359-6778 • FAX: (908) 359-1179

website: www.indofinechemical.com

e-mail: chemical@indofinechemical.com

Catalog no.: 19-311
Product name: 4'-Methylflavone
Lot No.: 0007166



SOLVENT CDCl3
NS 8
DS 0
SWH 9433.962 Hz
FIDRES 0.314486 Hz
AQ 1.5899440 sec
RG 22.6
DW 53.000 usec
DE 6.00 usec
TE 298.2 K
D1 1.5000000 sec
TD0 1

ICC-AUG-02
1H IN CDCL3
AVANCE-600

===== CHANNEL f1 =====
NUC1 1H
P1 7.50 usec
PL1 2.60 dB
PL1W 6.62584448 W
SF01 600.3343904 MHz
SI 32768
SF 600.3300138 MHz
WDW EM
SSB 0
LB 0.30 Hz
GB 0
PC 1.00

